

# State of Wyoming Corner Record

(In compliance with the *CORNER PERPETUATION AND FILING ACT*, Wyoming Statutes, 1997 Section 33-29-140 et. seq., and the Rules and Regulations of the Board of Professional Engineers and Professional Land Surveyors)

Reverse side of this form may be used if more space is needed.

Record of original survey and citation of source of historical information (if corner is lost or obliterated). Description of corner monumentation evidence found and/or monument and accessories established to perpetuate the location of this corner. Sketch of relative location of monument, accessories, and reference points with course and distance to adjacent corner(s) (if determined in this survey). Method and rationale for reestablishment of lost or obliterated corner.

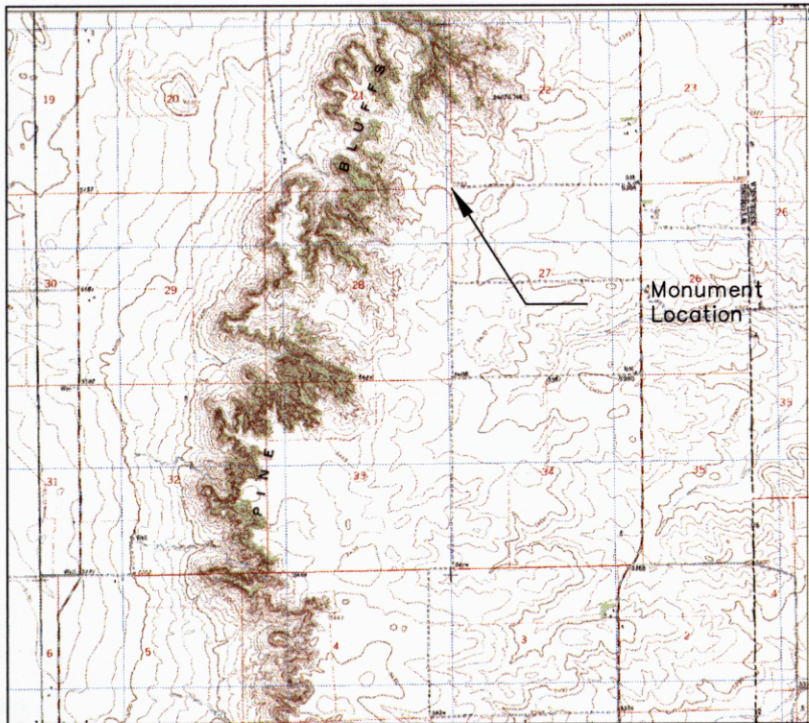
**FOUND:** FOUND YELLOW SANDSTONE SET VERTICALLY NEAR FENCE CORNER—NO MARKS FOUND ON STONE – NOT ACCEPTED AS ORIGINAL CORNER FOUND 1/2 IN REBAR 55 FEET SOUTH OF STONE ACCEPTED AS PERPETUATING ORIGINAL CORNER POSITION. IT IS BELIEVED THAT STONE WAS SET AS A COUNTY ROAD STONE AND THAT REBAR WAS SET FROM STONE BY AN UNKNOWN SURVEYOR

**SET:** NOTHING

See attached photos – For additional information on this corner see map of survey for T12N R60W and a portion of T13N R60W on file at the Laramie County Clerk's Office in Survey Cabinet 4 Map 29



**Found Rebar**



**Monument location**



**Found Stone**

Date of Field Work: 5/25/2007

Office Reference: 2655

### Cross Index Plat

	1	2	3	4	5	6	7	8	9	10	11	12	13	14	15	16	17	18	19	20	21	22	23	24	25		
A	+	+	+	+	+	+	+	+	+	+	+	+	+	+	+	+	+	+	+	+	+	+	+	+	+	+	A
B	+	+	+	+	+	+	+	+	+	+	+	+	+	+	+	+	+	+	+	+	+	+	+	+	+	+	B
C	+	6	+	5	+	+	4	+	+	3	+	+	2	+	+	1	+	+	+	+	+	+	+	+	+	+	C
D	+	+	+	+	+	+	+	+	+	+	+	+	+	+	+	+	+	+	+	+	+	+	+	+	+	+	D
E	+	+	+	+	+	+	+	+	+	+	+	+	+	+	+	+	+	+	+	+	+	+	+	+	+	+	E
F	+	+	+	+	+	+	+	+	+	+	+	+	+	+	+	+	+	+	+	+	+	+	+	+	+	+	F
G	+	7	+	8	+	+	9	+	+	10	+	+	11	+	+	12	+	+	+	+	+	+	+	+	+	+	G
H	+	+	+	+	+	+	+	+	+	+	+	+	+	+	+	+	+	+	+	+	+	+	+	+	+	+	H
J	+	+	+	+	+	+	+	+	+	+	+	+	+	+	+	+	+	+	+	+	+	+	+	+	+	+	J
K	+	+	+	+	+	+	+	+	+	+	+	+	+	+	+	+	+	+	+	+	+	+	+	+	+	+	K
L	+	+	18	+	+	17	+	+	16	+	+	15	+	+	14	+	+	13	+	+	+	+	+	+	+	+	L
M	+	+	+	+	+	+	+	+	+	+	+	+	+	+	+	+	+	+	+	+	+	+	+	+	+	+	M
N	+	+	+	+	+	+	+	+	+	+	+	+	+	+	+	+	+	+	+	+	+	+	+	+	+	+	N
O	+	+	+	+	+	+	+	+	+	+	+	+	+	+	+	+	+	+	+	+	+	+	+	+	+	+	O
P	+	+	19	+	+	20	+	+	21	+	+	22	+	+	23	+	+	24	+	+	+	+	+	+	+	+	P
Q	+	+	+	+	+	+	+	+	+	+	+	+	+	+	+	+	+	+	+	+	+	+	+	+	+	+	Q
R	+	+	+	+	+	+	+	+	+	+	+	+	+	+	+	+	+	+	+	+	+	+	+	+	+	+	R
S	+	+	+	+	+	+	+	+	+	+	+	+	+	+	+	+	+	+	+	+	+	+	+	+	+	+	S
T	+	+	30	+	+	29	+	+	28	+	+	27	+	+	26	+	+	25	+	+	+	+	+	+	+	+	T
U	+	+	+	+	+	+	+	+	+	+	+	+	+	+	+	+	+	+	+	+	+	+	+	+	+	+	U
V	+	+	+	+	+	+	+	+	+	+	+	+	+	+	+	+	+	+	+	+	+	+	+	+	+	+	V
W	+	+	+	+	+	+	+	+	+	+	+	+	+	+	+	+	+	+	+	+	+	+	+	+	+	+	W
X	+	+	31	+	+	32	+	+	33	+	+	34	+	+	35	+	+	36	+	+	+	+	+	+	+	+	X
Y	+	+	+	+	+	+	+	+	+	+	+	+	+	+	+	+	+	+	+	+	+	+	+	+	+	+	Y
Z	+	+	+	+	+	+	+	+	+	+	+	+	+	+	+	+	+	+	+	+	+	+	+	+	+	+	Z

Firm/Agency, Address

AVI P.C.  
2035 WESTLAND RD.  
CHEYENNE, WY. 82001

This corner record was prepared by me or under my direction and supervision.

SEAL & SIGNATURE

Telephone Number: 307-637-6017



Corner Name NW Section 27, T 13 N, R 60 W, 6TH P.M.

Cross-Index No.: R-13

County: LARAMIE Wyoming

SBRPEPLS/PLSW: March 1994; PLSW January 1998

RECORDED 3/19/2008 AT 4:29 PM REC# 495887 K# 2050 PG# 1618  
 DEBRA K. LATHROP, CLERK OF LARAMIE COUNTY, WY PAGE 1 OF 3





FOUND STONE  
View North



FOUND STONE  
View East



View South  
FOUND STONE



View West  
FOUND STONE

Corner Name NW Section 27, T 13 N, R 60 W, 6TH P.M.

RECORDED 3/19/2008 AT 4:29 PM REC# 495887 X# 2050 PG# 1619  
DEBRA K. LATHROP, CLERK OF LARAMIE COUNTY, WY PAGE 2 OF 3





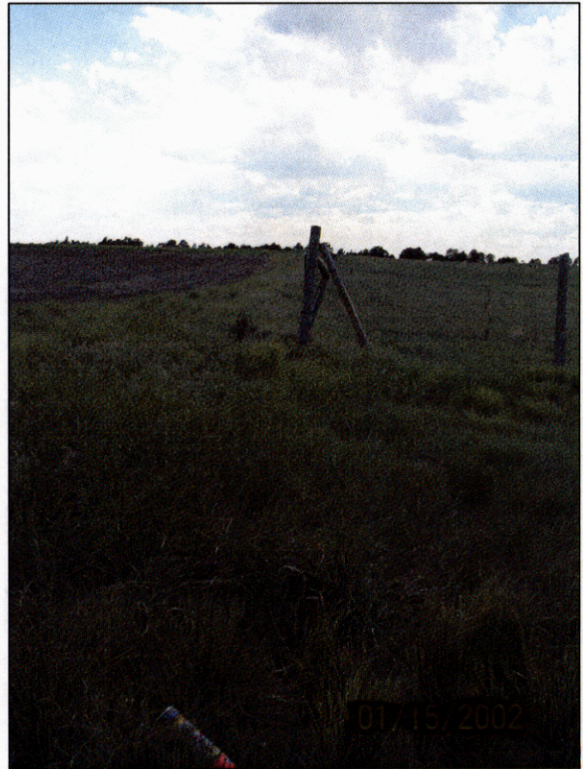
FOUND REBAR  
View North



FOUND REBAR  
View East



FOUND REBAR  
View South



FOUND REBAR  
View West

Corner Name NW Section 27, T 13 N, R 60 W, 6TH P.M.

RECORDED 3/19/2008 AT 4:29 PM REC# 495887 X# 2050 PG# 1620  
DEBRA K. LATHROP, CLERK OF LARAMIE COUNTY, WY PAGE 3 OF 3